

Mr. Schweich To Speak on French Music

The Daytime Lecture Series will resume with a lecture on popular French music by Mr. Schweich in Room 108 at 9:00 a.m. on Tuesday, November 13.

Because of the mid-term examinations, the lecture series has been temporarily postponed.

Mr. Schweich stated that because of the apparent interest in popular songs among American youth, he chose French popular music as his discussion topic. He felt that the comparison and occasional contrast between the two types of popular music will appear to many of the students.

The first half of the lecture will cover the process of publishing popular French songs and will illustrate their contents. During the second phase, records will be played so that the audience may witness the full effect of French sentimentalism. This is presented in such songs as: C'est magnifique, C'est si bon, and La Vie en Rose.

On Tuesday, October 30, a lecture on "Natural Law" was presented by Dr. Fagan, Saint Louis Campus Philosophy and Logic professor. There was a small turn-out of students, but Dr. Fagan stated that it seemed to her that those who attended possessed enough interest to make the lecture worthwhile. Assistant Dean Jack Morgan, the Engineering School at the Columbia Campus was a visitor to this discussion.

Employment Committee To Aid Jobless Students

The Employment Agency Committee is beginning its second year of operation as a standing committee of the Student Senate. The committee is composed of two members, Guy Simpson and Charles Armbruster, and chairman Bill Ebbinghaus. The purpose of the committee is to find jobs for the students who are interested in part time work.

Within a week the committee plans to send out form letters to various businesses, asking them if they would be interested in hiring St. Louis Campus students on a part time or summer job basis. The business concerns are given space on the form letter to list the requirements applicants must meet to be eligible for a job. Last year 48 per cent of the businesses con-



Campus Dramatic Group Now Rehearsing 'Laura'

After a series of delays, the St. Louis Campus Dramatic Group is ready to undertake its first production of the year. The play to be presented is "Laura" by Vera Caspary and George Sklyar. The play had an extended Broadway run and was later made into a highly successful movie.

Readings for parts were held on Wednesday, October 31, and the cast was selected at that time. The characters listed here are in order of appearance. Mark McPherson, a detective, will be played by Al Becker. Danny Dorgan, a teenager infatuated with Laura, will be portrayed by Tom Doerr. John Dudash will recreate the role of Waldo Lydecker,

a prim and proper gentleman. John first portrayed Waldo in a cut version of the play while in high school. Bill Cuker will be Shelby Carpenter, Laura's fiancée. Bessie Clary, the maid of the dead woman, will be portrayed by Sharon Stephenson. Mary Hilderbrant was cast as Mrs. Dorgan, Danny's mother. Kathleen Vasquez will portray a girl. Dennis Deters will take the role of Olsen, a cop.

The play itself is an intricate carefully conceived mystery. Mark McPherson, a detective, has been called upon to discover the murderer of Laura, a beautiful woman whose body was found mutilated in her apartment. Many complications arise when Laura's reputation is brought into the open. A double-barreled surprise ending adds to the effectiveness of the play.

Specific dates have not yet been set, but tentative plans call for the play to be presented sometime in January.

Pre-enrollment Monday

Pre-enrollment for students now attending the St. Louis Campus will begin next Monday, November 12 and continue through November 23.

At this time students, with the help of their advisers, will select their courses for next semester. These selections will be submitted to the administration and from them the number and time of each section will be determined.

Students will be allowed to plan the exact time and schedule of their classes at a later date.

Poor Support Sinks Yearbook; LANDMARK Falls Short by 70

The St. Louis Campus will have no 1962-63 yearbook.

In the seven days of its subscription drive, LANDMARK succeeded in selling only 230 of the 300 subscriptions necessary for publication, therefore, according to resident administrator C. E. Potter and LANDMARK business manager Joe Cole, no attempt will be made to publish a yearbook this year.

Subscribers may obtain their refund from 12 to 2 next Monday and Tuesday, November 12 and 13, in the student lounge.

Cole said he would like to thank those students who supported LANDMARK, "but I think it's a damn shame that the 335 students who did not buy a yearbook didn't have enough respect or school spirit to support the yearbook."

Although the decision to forego publication of LANDMARK was made at the conclusion (October 17) of the unsuccessful attempt to muster 300 subscribers, the official announcement was withheld until October 29 to prevent any possibility of jeopardizing the success of the Halloween Dance. The dance was planned and advertised to aid the yearbook.

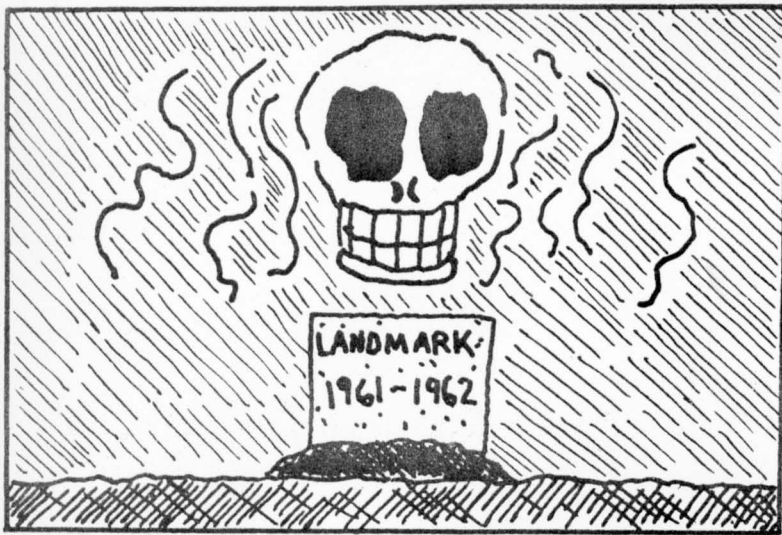
The reason for abandoning the attempt to publish LANDMARK was not financial but was based on the opinion that to produce a yearbook for any less than 300 students would not justify the work and sacrifice of the staff.

As soon as the failure of the yearbook became evident, plans for making available to the students a record of this school year were immediately formulated. To do this Mr. Potter suggested that group pictures be printed in next semester's issues of the TIGER CUB and that a durable, inexpensive cover suitable for binding this year's issues be made available. He emphasized, however, that both plans would depend on the interest that the students show in them.

Mr. Potter also expressed the hope that an attempt be made again next year to publish LANDMARK and that this year be included in that edition.

Timetable

TOMORROW — Intercollegiate Bowling at Arena.
NOV. 12 to NOV. 23 — Pre-enrollment; see your advisers
NOV. 13 — Daytime Lecture Series continues in Room 108 at 9:00 a.m. with Mr. Schweich speaking on French popular music.
NOV. 17 — Intercollegiate Bowling.
NOV. 21 — Next Issue of TIGER CUB.



A STRICKEN COMRADE

Let's Clear the Air

The Halloween Dance was an encouraging success. The LANDMARK subscription was a disappointing failure. Why?

Marge Doerr and the SA Social Committee were generously rewarded for their time and effort. Joe Cole and the yearbook staff received nothing but opposition for their work and planning. Why?

In trying to analyze this situation we propose that in this, and every other student body, there are participators and non-participators. It seems safe to assume that of the 565 students presently enrolled here at least 230 are of the former class, for during both the Senate elections and LANDMARK's subscription drive this number responded. But does this leave the other 235 in the latter class? We think not. Although there are people who wouldn't participate in Christmas if they lived in Jerusalem, it seems to us that the majority of this second group are students who WOULD participate IF they felt this school offered them something more than an inexpensive way to get credits.

But how do you determine which activities to present and which to abandon? In an ideal situation, the student government provides the answer. But this is far from an ideal situation, for our Student Senators simply cannot talk to enough people to comprehensively or accurately represent the school's opinion. This is not a criticism of the Senate, merely a realization of the physical impossibility of such an undertaking.

We feel that the answer to this problem in communications lies in compulsory assemblies for the entire student body. These assemblies would be held only every three or four weeks or whenever the situation seemed to warrant it. Space limitations would probably necessitate separate assemblies for freshmen and sophomores. Attendance would be taken. The important feature of these meetings, however, would be that they be open to full and complete discussion for their whole purpose is the improvement of communications between the various segments of opinion on this campus. For those who need a selfish motive to participate it should be remembered that by properly using such meetings they can initiate EXACTLY the activities which they desire.

Finally, it seems to us that the greatest potential value of such modified town-meetings will be the self-examination that should result from a free exchange of opinions. If this introspection occurs, if the student comes to a better understanding of his own opinions, then whatever sacrifice in class or recreation time occurs will be well spent.

In My Opinion

By JIM ROSENFELD

Wander through the campus under a cool, fall, windy sun. Stop a moment under a red-leafed oak, a maple, or a green-shadowed pine. And listen - to the faint sound of small flocks of whippoorwills, and to the rustlings of fluttered leaves. Cast a pebble into the still, mysterious water and watch the infinite series of ripples which seem to come from nowhere. Lie down by the pond. Relax and do a bit of daydreaming.

Visualize this campus of future years. Imagine, as you will, either the lonely, silent hills of a deserted country club, or a brilliant, bustling University, modern and well-kept. If you see the former, you will likely feel dismay, but if you speculate that this college, like the child that it is, may grow and prosper, then you will feel proud, even exuberant. And if it is within you to feel such emotions (not all students are capable of the vision, the affection, or the loyalty), then you have what our college needs so desperately - esprit de corps.

To you, the dreamer, it may seem difficult to transform the ideal into the real - the dream into actuality. But this task may be achieved by you, for you will soon be called upon to support for our school. You may possibly be asked to travel to Jefferson City, the state capitol, to voice your opinion to the State Senate Education Committee. Therefore, if you consider yourself affiliated closely enough with our school that you wish to act, remember that day, under that sun, when you had that dream.

We Must Coordinate

Whenever there are students who wish to aid their school in its future growth, there must be a plan or a method of coordination to utilize their efforts. Many well-meaning collegiates at the University of Missouri - Saint Louis Campus wish to contribute as much help as they possibly can so that those who were not admitted, because of inadequate facilities, this past fall, may one day be able to have an inexpensive, quality education.

Therefore, in order that our students may effectively support this University, I propose that the Student Association create a Committee

for the Establishment of the Four Year Plan.

This student committee would work hand-in-hand with the administration and faculty to direct and lead the student body in such activities as publicity drives, petitions, and constant and effective correspondence with the public officials of our state and community. I believe that such measures are necessary and should be enacted at the earliest possible moment.

The Grave Situation

The last presentation of this campus' Lecture Series was a very worthwhile discussion, by Dr. Fagan, on "Natural Law." But, how many students truly enjoyed and received the benefits of this conscientious lecture. Not many! There was a sickening sum total of eight (8) people present.

Surely, there were some students out of the 98.56% of the whole student body, who avoided the discussion, who could possibly have attended; but it seems that playing Pinochle, traveling to the Padoga, and kibbitzing were more important than any educational extra-curricular activity.

Many of the students couldn't care less about such disgusting situations; some even think it humorous. But, people such as Assistant Dean Jack Morgan from the Columbia Campus, who attended the lecture, must have a far different attitude about this depressing degenerative condition.

Tiger Cub States New Letter Policy

The Tiger Cub welcomes letters on any subject from the student body. These letters should not be over two hundred words in length and must be signed. The Tiger Cub regrets that it will not be able to publish any unsigned letters. Although the Tiger Cub will not publish any unsigned letters, it will omit the signature if requested. All letters addressed to the newspaper may be placed in the Tiger Cub box in the office, or it may be brought directly to the Student Association office.

Fighting for the Growth of the Student in the School and the School in the Community.

TIGER CUB

Editor-in-chief	Roy Walkenhorst
Business Manager	Jim Wilson
Editorial Editor	Jim Rosenfeld
News Editor	Barb Wobbe, Carol Kral, Al Becker
Feature Editor	Pat Knarr
Sports Editor	Marge Doerr
Editorial Staff	Mike Bernsen, Bob Chrisman, Kathy Connally, Bill Ebbinghouse, Mary Hildebrant, Sharon Hutson, Sandy Kelly, Jane Woods.
Business Staff	Joe McGennis, Sharon Hummel
Photographer	E. T. Moore & Son
Faculty Adviser	Miss Clare McDonnell



SA COMMITTEE CHAIRMEN — Don Grisser, Barb Schaefer, Marge Doerr, Alan Stein, Stephanie Taylor and Bill Ebbinghaus. Absent were Carl Doerr and Barry Broder.

Student Senate Approves 8 Committee Appointments

by CAROL KRAL

The Student Senate recently approved the appointment of eight Senate Committees. The appointments were made by Mike Lindhorst, Student Association President.

Marge Doerr, the chairman of the Social Committee, will schedule and conduct all the Association's dances and concerts with the consent and advice of the Senate majority. Working with her are Jenny Stephenson, Jan Schmelig, Jim Wilson, Sharon Hutson and Jerry Brooks.

Barry Broder, chairman of the Book Pool Committee, will facilitate the exchange of student books. Under him are Leslie Schrier and

Jim Rosenfeld.

Stephanie Taylor, Office Committee chairman, performs secretarial duties for any officer, department, or committee chairman in the Senate. Working with her are Pat Knarr, Jan Finazzo and Carol Entzeroth.

Barb Schaefer, head of the Committee on Social Organization, will perform any necessary research work on social organization and functions assigned to it. Working with her are Ray Vietmeier and Betty Zuroweste.

Bill Ebbinghaus, chairman of the Employment Agency Committee, assists Association members in securing jobs or job leads. Working with him are Guy Simpson and Charles Armbruster.

Alan Stein heads the Rules and Elections Committee and will conduct all the Association's elections in the manner provided for in the Association's regulations and also to formulate any rules, bylaws, or amendments that are referred to it. Under him are Mike Stanis and Steve Lipkind.

Don Grisser the chairman of the Ways and Means Committee will do research and report on any special Senate Business. His committee will also provide ways and means for carrying out regular Senate business. Working with him are Ron Dudeck and Ron Holland and Carl Doerr chairman of the Intermural Committee will conduct all St. Louis Campus Intermurals with the help of Chris Weitkamp, Cleve Dobbs, Bruce Holtman and Dave Hart.

Meanwhile . . . Mizzou

BY MARY HILDEBRANT

The Missouri Student Association has ended the card stunts during the M.U. home games. The section was disbanded after its rather questionable interpretation of a direction. After receiving the direc-

tion to form an anchor, the students showed their complete understanding of the direction by tossing their cards into the air, filling the stadium with a snow of black, yellow, white, and red cards. The Student Spirit chairman stated that the only explanation that he had for the

occurrence was that the card section must have interpreted the call as "Anchor's A-way."

If you think this paper has problems, Mizzou's Maneater hasn't fared much better than the TIGER CUB. In a report on the card section the Maneater stated, "Funk, (Student Spirit chairman) said confusion was added to confusion because the microphones were not turned toward the card section, resulting in audible directions." Perhaps Mr. Funk feels that confusion would be lessened if the directions had been inaudible.

Dance, Buzz Book Clear \$59 for SA

A successful dance and an ever-increasing buzz book sale have combined to net the Student Association \$62 in profits in the last two weeks.

The Halloween Dance, attended by 160 people, had expenses of \$100-\$65 for the Aff-Tones and \$35 for decorations and refreshments. Receipts totaled \$135 with advance ticket sales bringing in \$92, sales at the door amounting to \$28 and sale of cider and donuts netting \$15.

Expenses for the buzz book totaled \$21, with printing for the covers amounting to \$18, and paper and stencils costing \$3. The covers were the only part of the book which was produced outside school. All of the pages were done on campus, using the mimeograph machine in the office.

After the final day of selling buzz books in the lobby (November 2), the SA reported net receipts of \$45 or a profit of \$24. Although the books will no longer be sold in the lobby, students may still obtain them in the Student Activities office, room 127.

Our Mistake

The TIGER CUB regrets the omission of Charlie Gaynor, Howard Porter, Gerry Stimson, and Don Souders from the list given in the last issue of St. Louis Campus participants in the ROTC program at Washington University.

Another demonstration of the much-talked about ability of Fraternities to contribute to the growth of co-operation between the students by the Kappa Alpha fraternity. After being contacted by a representative of Coach Devine who asked in Devine's behalf that the K.A.'s leave their Confederate flag at home, the K.A.'s graciously acquiesced by producing it at the Missouri-Iowa game and waving merrily away. Apparently these boys really do believe the South will rise again.

More good literature has made its way onto the Columbia campus. In addition to the return of the Showme, the fall season has seen the annual return of those sterling testimonies to the intellectual prowess of certain campus elements, the Chi Iota and the Pi Xi circulars, low class versions of Confidential magazine which expose all the facts and then some about the fraternities and sororities. The St. Louis Campus of the University of Missouri looks forward eagerly to the day when it too, is large enough to enjoy the benefits of such intellectually stimulating extra-curricular publications.

Murphy Tells

CBC of Campus

Mr. Thomas Murphy, Western Civilization instructor, represented the St. Louis Campus at the C.B.C. college night Saturday, Oct. 27. According to Mr. Murphy, there was a large turn out of both parents and students and much interest was shown in the St. Louis Campus.

Mr. Murphy supplied inquisitive students and parents with general information concerning the Campus. He told them of course offerings, the school's standards, student teacher ratio and prospects for enlargement to a four year college.

Students interested in attending the St. Louis Campus were asked to fill out cards. At a later date, these students will be mailed pamphlets of general information and application forms for admission.

Flowers For All Occasions;



**FLORAL
COMPANY**

We Deliver

8606 LACKLAND ROAD
St. Louis (Overland) 14, Mo
HA 7-0913

WESTLAKE PHARMACY PRESCRIPTIONS

Professional Pharmacists — Medical and Sick Room Supplies
Established 40 Years * Free Delivery Service

7520 Natural Bridge	NORMANDY	EV 5-5400
1504 Hodiament	ST. LOUIS — WELLSTON	CO 1-4100
9319 Midland	OVERLAND	HA 7-8820



Automatic Cafeterias
and Complete Vending
Machine Systems

1325 Ferguson • St. Louis

PA. 6-6767



1 HOUR MARTINIZING

Southwest Corner PAGE and WOODSON

HOURS: 7 A.M. to 7 P.M. DAILY & SATURDAY

DRIVE-IN WINDOWS

IF YOUR CAR NEEDS FIXIN'... SEE

NI X ON

CO 1-3434
6819 W. Florissant
O'Fallon, Mo.

BROS.

EV 1-1594
2525 Kienlen
CR 2-3522

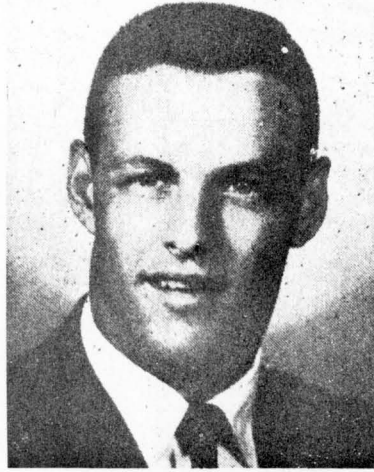
Cubs to Bowl St. Louis U.

Tomorrow, November 10, the St. Louis Campus Bowling team will bowl against St. Louis University's School of Pharmacy's team number 2. "I expect this match with St. Louis University to be very close, although our team is expected to win," comments Mike McCrudden. "Especially since Carl Doerr is expected to have a 700 series tomorrow."

The team had an open date on November 3.

On October 27, the St. Louis Campus Bowling team rolled over Parks Air College with a three game team total of 2742 pins, compared to Parks' 2679 pins. Keith Eilerman led the Campus Bowlers with a total of 490 pins for three games. He was closely followed by Mike McCrudden, who knocked down 486 pins during the three games. The other bowlers and their three game totals were: Jerry Brooks, with 438 pins; Mike Bernsen, with 414 pins and McClintock, with 395 pins. The team handicap was 173 pins per game.

No schedule has as yet been made available to the team members.



BOB MEYERS, St. Louis Campus Basketball coach.

Campus Roundball Squad Starts Practice Monday

St. Louis Campus' basketball team will get into full swing on November 12, by starting practice in the Normandy Junior High School Gym. Coach Bob Meyers and his assistant, John Antonio, are expecting a large turnout for this year's team and hope that the spirit will be high. He is also expecting several members of last year's team to be back out and provide some needed experience. They are Larry Thoele, Tom Jacobs and Tom Haddican.

Coach Meyers said that, "The

league is well-balanced and that Washington University's J.V., McDonnell Aircraft, and Harris Teacher's College Junior Varsity will provide some of our roughest competition." Although the coach would not make any predictions, it is his hope to improve on last year's over-all record of 7 wins and 11 losses and on their second place finish in the Greater St. Louis Basketball Association.

The Cubs will play at least 14 games and more may be scheduled as the season progresses. As the TIGER CUB went to press the schedule was:

Dec. 4 - McDonnell Aircraft, 8:00; Dec. 6 - St. Louis Baptist College 8:30; *Dec. 11 - Logan College, 8:45; Dec. 18 - St. Louis Pharmacy College, 8:00; Dec. 21 - Harris Teacher's College J.V., 6:30; *Jan. 7 - Harris Teacher's College J.V., 8:00; Jan. 11 - Eden Seminary, 8:00; Jan. 14 - Sanford-Brown, 8:45; *Jan. 17 - St. Louis Baptist College, 8:00; *Jan. 25 - McDonnell Aircraft, 8:00; *Jan. 29 - Logan College, 8:45; *Feb. 5 - St. Louis Pharmacy College, 8:00; *Feb. 8 - Eden Seminary; *Feb. 15 - Sanford-Brown.

*Denotes home games. Missing times will be announced later.

Coach Devine Asks Band, Fraternity to Cut Dixie

Head Football Coach of the Missouri Tigers, Dan Devine, in a recent letter to Missouri Band director, Charles Emmons, requested that "Dixie" be dropped from band selections at the games.

Also officers of the Kappa Alpha fraternity were contacted by a member of Devine's staff and asked not to bring their Confederate flag to football games.

Coach Devine said that he felt that students use "Dixie" as an excuse for not learning the school song.

Later, Devine agreed to let the final decision concerning the playing of "Dixie" at the football games be made by the University's students. He also stated that he was sure that the final decision of the students would meet the approval of all concerned.

In conclusion, Devine stated, "We are interested in three things: (1) Having the best football team we possibly can within the framework of the University; (2) Having the student body united behind the team and (3) Having the members of our squad graduate and become useful citizens in our society."

DECEMBER 17
Second of the Monday Evening Concert Series
James Miller directs the Early Music Society in Christmas Music of the Renaissance and Baroque

HOUSE OF PUBLICATIONS
Specializing in Paperback Books

3626 OLIVE
JE. 3-4160
10 a.m.-1 a.m.

719 PINE

6217 EASTON

Lost F'balls Halt IM's

The St. Louis Campus intramural program has been suspended until the two balls used in the football IM's are returned to Carl Doerr. Doerr, chairman of the S.A. intramural program stated, "The balls disappeared after the conclusion of the last organized game and Intramurals will not be resumed until they are returned."

EVERgreen 2-3063



E. A. HORSTMAYER INC.
JEWELER-OPTICIAN

7246 Natural Bridge
Arthur E. Zbaren Arthur S. Zbaren

Now YOU EARN Interest with Insured Safety
3 1/2 %



NORMANDY BANK

7301 Natural Bridge • EVERgreen 3-5555



Taylor's
wonderful world of fashion

Step into a glamorous fashion world filled with top designer creations and famous brands at prices that won't break your budget. Town and country sportswear for your campus needs.



Normandy Shopping Center (Northwoods)

LUCAS-HUNT & NATURAL BRIDGE-EV. 5-7724

OPEN MON., THURS., FRI. 10 A.M. to 9:30 P.M.
TUES., WED., SAT. 10 A.M. to 6 P.M.